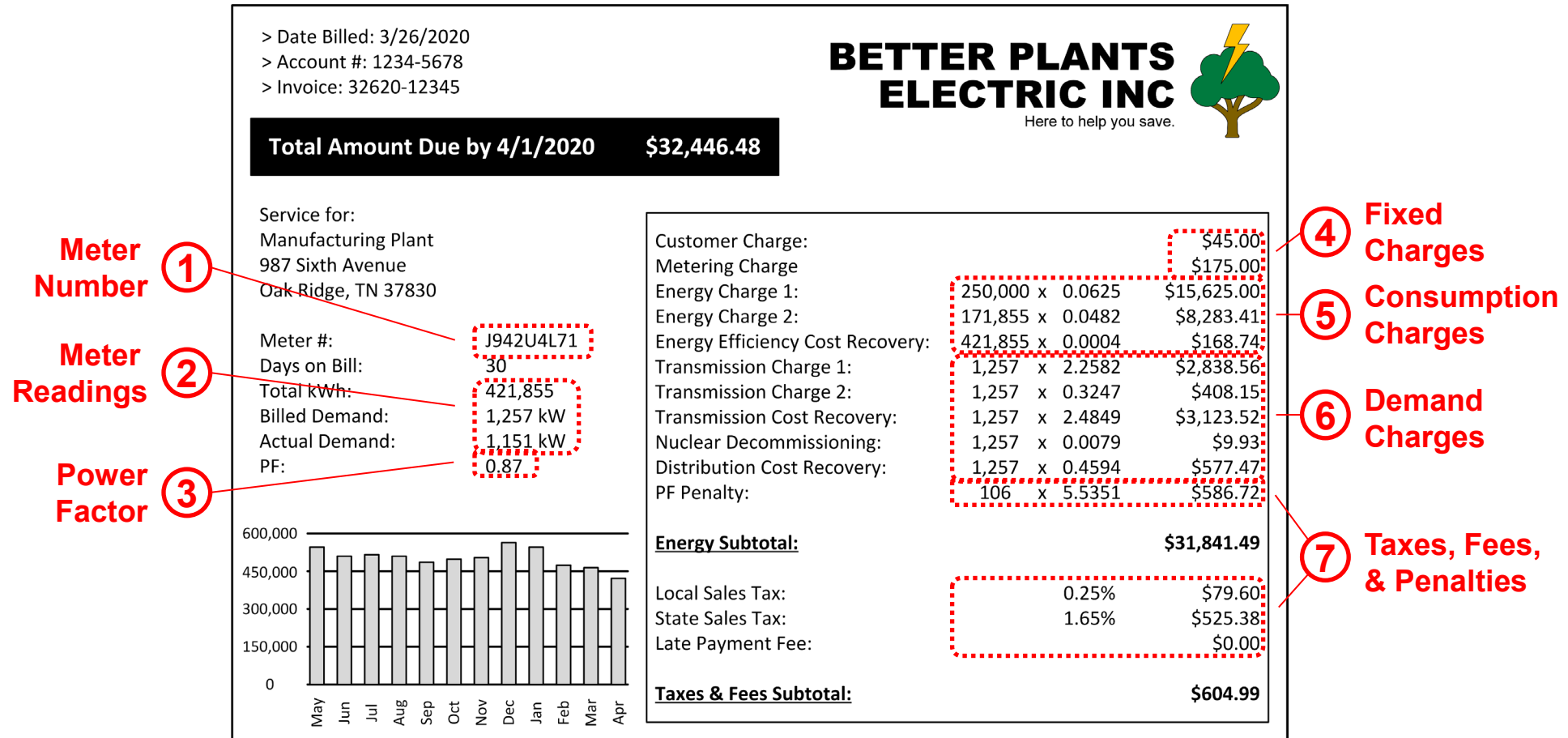


Homework Questions: Due COB Monday 6/9

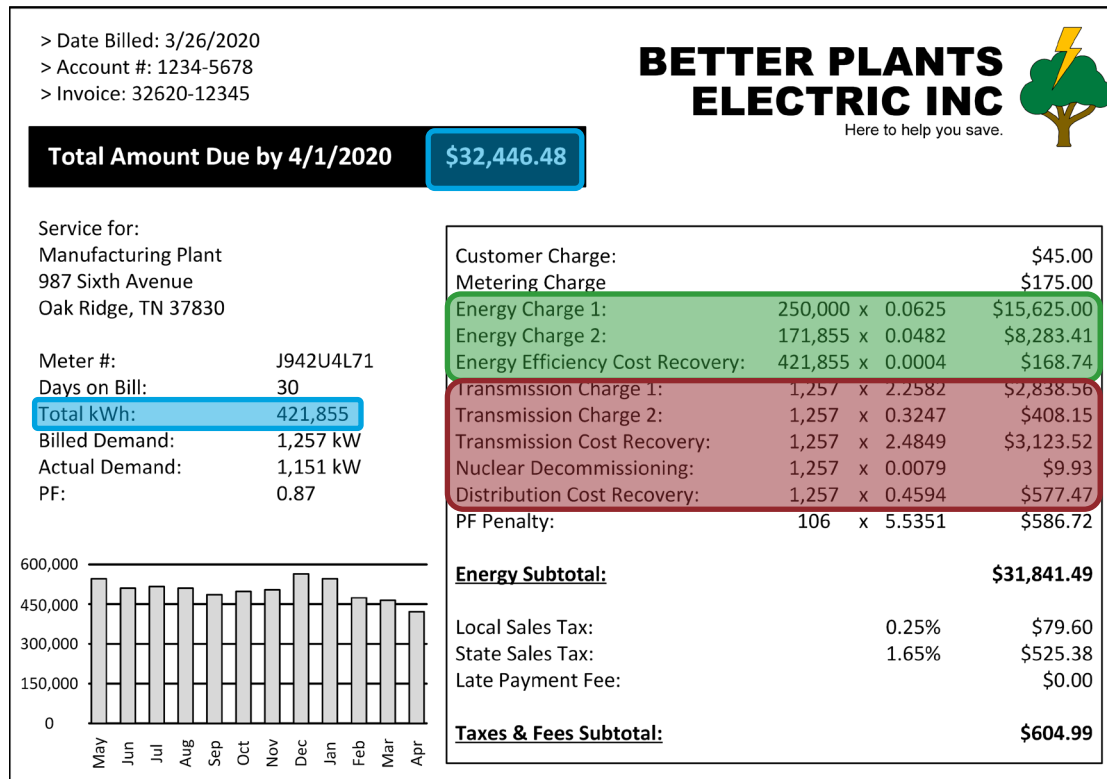
- Complete the utility bill exercise and find roof or ground space for solar at your facility.
 - Retrieve facility address and usable roof/ground space
 - Collect Electric and Natural gas bills
 - Complete the utility bill exercise (excel tool attached)

HW Tip: Key Components to Your Electricity Bills



HW Tip: Calculating Your Cost of Electricity

Identify all the charges and how they are assessed...



Blended Cost:

$$C_{blend} = \frac{\$32,466.48}{421,855 \text{ kWh}} = \frac{\$0.077}{\text{kWh}}$$

Marginal Costs:

$$C_{mrg} = EC2 + EECRF \\ = \frac{\$0.0486}{\text{kWh}}$$

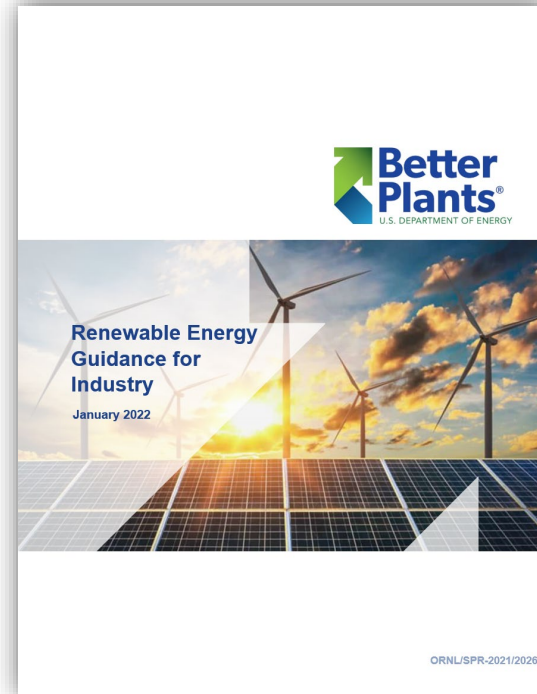
$$D_{mrg} = TC1 + TC2 + TCRF + NDC + DCR \\ = \frac{\$5.5351}{\text{kW}}$$

Renewable Energy for Industry Guidance Documents

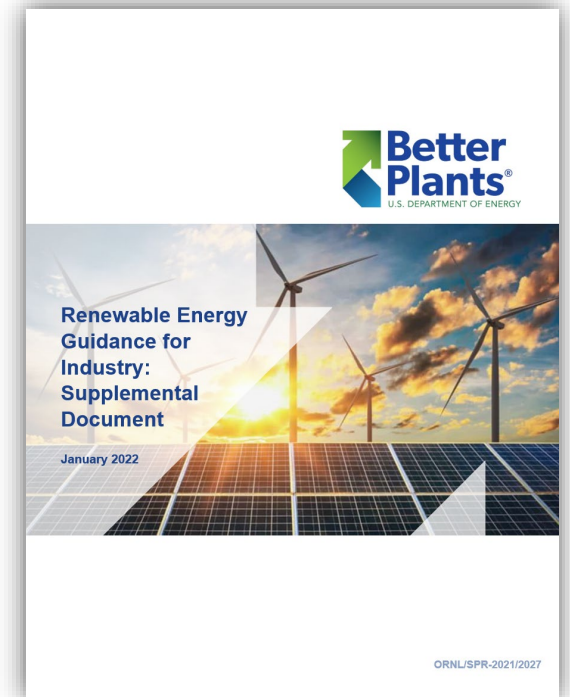
- Access the full main document [here](#).



- Access the supplemental document [here](#).



Main Document



Supplemental Document